



KPMG Tax & Legal

Service portfolio

2024

#TurningInsightsIntoOpportunity



Our services are focus on understanding our customers needs, helping them to generate value and strong-competitive advantages through the implementation of the best market practices.

Tax & Legal

We have a solid multidisciplinary team and disruptive methodologies that are at the service of our clients, offering specialized advice on highly relevant tax, labor and legal issues, which contribute to strengthening the business culture of compliance.

Over time, our specialists have built their careers in diverse sectors and fields such as banking, finance, consumer goods, mining, technology, among others. Therefore, we can respond to all industries needs by providing quality advice services.



María Julia Sáenz
Lead Partner, Tax &
Legal

mariajuliasaenz@kpmg.com

“ From our Purpose as a firm and as part of our role as advisors, we consider taxation and rule of law fundamental key to the development of the country. In this sense, it is critical for us to strengthen the Good Corporate Governance of our clients according to the best compliance and tax practices, as well as strategic advice on labor and legal matters and to promote the sustainable growth of business. ”

Our Services

Tax Consulting

We provide tax opinions and local and international tax planning in close connection with business leaders in order to assist in the development of economic activities.

Tax Compliance

We understand and manage the complexity of current tax legislation and help to improve the processes of tax departments to comply with tax obligations.



Transfer Pricing

We guide our clients in the process of collecting, presenting and backing up information related to transfer prices rules.

Tax Innovation and Technology

We provide automation services for operational processes or tasks within tax department's scope using Robotic Process Automation (RPA) in order to achieve efficiency.

Legal Services

We work with our professionals and experts to offer legal advice on relevant transactions and day-to-day advice customized to client needs.



Global Mobility Services

We combine global processes and technological tools to provide quality services to corporations and their staff working around the world.

Labor and Immigration

We align our work to the strategic goals and objectives of client's business, seeking to help them to manage talent in the best way.

Tax Consulting

We offer comprehensive solutions in tax matters with a high level of efficiency, aimed at accompanying the business objectives, local or international.

**For more information,
please contact:**



Carlos Rodríguez Summers
carlosjrodriguez@kpmg.com



Roberto Casanova-Regis
rcasanovaregis@kpmg.com

We provide advisory services in the different areas of tax matters to local and foreign entities, with special emphasis on resolving doubts, detecting and solving tax issues, reducing tax contingencies on business decisions regarding transactions and structures derived from business activity in different industries.

Our services are mainly focused on:

Tax Consulting

We provide tax advice to local and international corporations in all tax matters required for an efficient development of business activities, including the appropriate application of taxes, agreements to avoid international double taxation, special regimes, among others, based upon an adequate understanding of business development.

Tax Planning

Our team has developed strategies that allow efficient management of the tax cost in different kind of operations considering all savings opportunities allowed by the local and international tax law and the application of international treaties. Likewise, we assist in the analysis of the tax impact of new business expansion or projects.

Tax Audits Support

We work to provide support and advice in meeting the requirements made by the Tax Authority, preparing the documentation and writing solid responses, as well as assistance in closing the examination procedures initiated by and meetings with the Tax Authority.

Tax Procedures

We represent companies in administrative procedures as claims, appeals and legal proceedings regarding tax disputes. We help clients to define efficient and timely strategies at the different stages of the tax procedures.

Tax Consulting

We offer comprehensive solutions in tax matters with a high level of efficiency, aimed at accompanying the business objectives, local or international.

**For more information,
please contact:**



Carlos Rodríguez Summers
carlosjrodriguez@kpmg.com



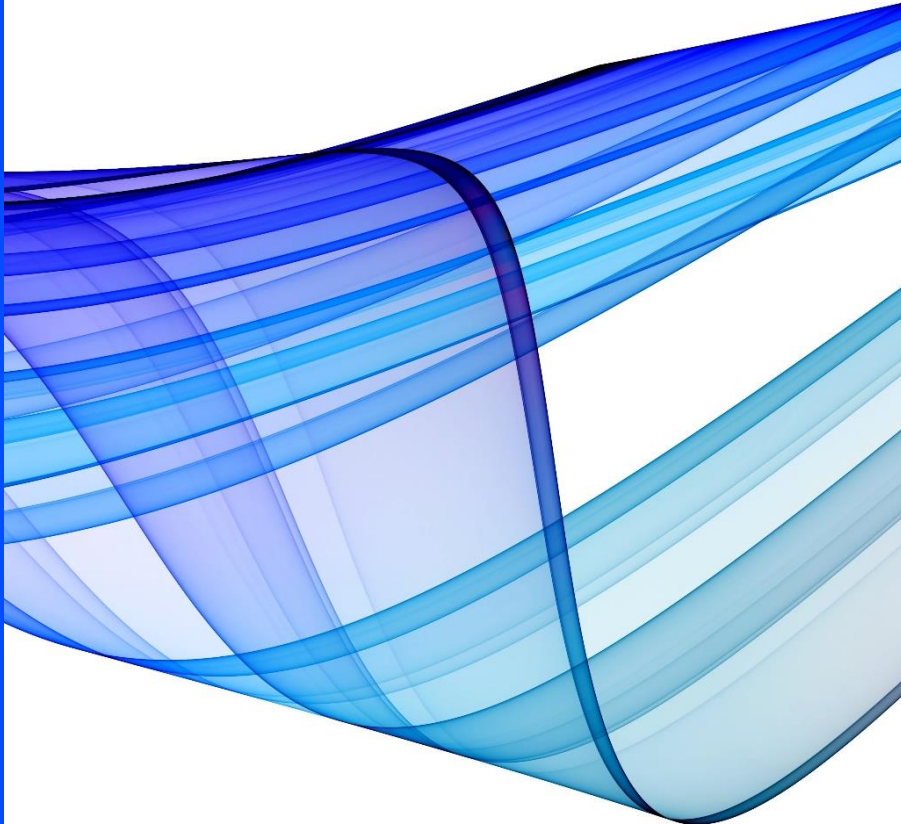
Roberto Casanova-Regis
rcasanovaregis@kpmg.com

Customs Consulting

We provide advice on customs and foreign trade matters, and application of special or exceptional customs regimes, assistance in inspection procedures, planning, preventive reviews and due diligence.

ESG Consulting

We help our clients determine savings and tax opportunities in general as part of the design of the ESG strategy. Likewise, we have our own methodology in order to identify the tax risks and opportunities linked to the management of the tax manager that could be part of the material areas and projects to be reported under international sustainability standards such as the GRI, SASB, TCFD, among others.



Tax Compliance

We offer efficient services focus on avoiding tax contingencies risks and identifying opportunities for improvement in a preventive manner.

For more information,
please contact:



Ahmed Vega
ahmedvega@kpmg.com



Iván Mejía
imejia@kpmg.com

We assist companies in the proper determination of their tax obligations, identifying opportunities for tax savings or prevention of tax contingencies.

Income Tax Return

We review the annual Corporate Income Tax return, including the monthly advance income tax payments and applicable credits, in order to avoid any tax omission or prevent contingencies when filing income tax return.

Tax Diagnostic

We evaluate the exposure to tax contingencies due to an incorrect determination of taxes as a taxpayer or when the taxpayer act as a withholding agent. We assist on prevention procedures to avoid or reduce penalties and correction of the tax determination before any tax audit.

Monthly Tax Obligations

We assist in the monthly tax determination, both as a taxpayer and when the taxpayer act as withholding or collection agent, verifying the correct application of tax criteria and the appropriate supporting documentation.

Tax Audits

We support in meeting the Tax Authority requirements, through the study and analysis of information and supporting documentation in order to assess its consistency and suitability.

Tax Outsourcing

We prepare the calculation and working papers of taxes; we help filing tax returns and other information required by the Tax Authority. We also help attending information requests related to tax determination and filing the accounting books and records before the Tax Authority. Likewise, we prepare the calculation of advance income tax payments and tax provisions that should be recorded in the accounting records.

Due Diligence Tax

As part of the comprehensive analysis of business transactions, we detect and quantify the amount of tax liabilities that could be audited by the Tax Authority. Therefore, we help anticipating tax penalties and any other amendments in tax returns frequently required by the Tax Authority.

Transfer Pricing

We guide our clients in the process of collecting, presenting and supporting information related to transfer pricing rules.

For more information, please contact:



Juan Carlos Vidal
jcvidal@kpmg.com



Frida Llanos
fridallanos@kpmg.com

We provide specialized advice on transfer pricing rules, allowing our clients to fulfill their formal obligations and attend Tax Authority requirements. We help our clients accessing to key information in order to evaluate decisions in operations with related parties that are carried out daily.

Planning

We advise on the design of sustainable transfer pricing policies based on the analysis of the relevant financial, economic and tax aspects of each transaction.

We estimate the Fair Market Value for transactions with related parties and help our clients to evaluate optimal structures and supply chains from a tax perspective including the diagnosis based upon the Country-by-Country Report required by the Tax Authority and the BEPS 2.0 guidelines.

Implementation

We assist in the implementation of adequate processes, controls and technology for the administration and monitoring of transactions that should be determined by transfer prices rules.

Compliance & Documentation

We assist in the fulfillment of formal transfer pricing obligations, including the preparation of annual transfer pricing tax return, Local Report, Master Report and Country by Country Report.

We assist in the preparation of the Benefit Test and advice on the support documentation related to intra-group services according to the tax law requirements.

Disputes

We help resolving transfer pricing controversies or disputes in audit processes initiated by the Tax Authority or litigation in other administrative or judicial instances. Likewise, we advise on the conclusion of Advance Price Agreements (APA's) and correlative price adjustments in Mutual Agreement Procedures (PAM).

Tax innovation and technology

We combine our experience in tax processes with the best technology tools to provide customized solutions in automation and business intelligence, helping our clients to optimize tax compliance and risk reduction.

**For more information,
please contact:**



Diana Castillo
dianacastillo@kpmg.com



Luis Zaldivar
luiszaldivar@kpmg.com

Our products have been designed to allow companies to use information efficiently and have adequate control of results.

Processes Automation with RPA

We use Robotic Process Automation (RPA) to provide tax operational process automation solutions customized to our clients needs.

Our Agile Methodology and experience in taxation allow us to design solutions that meet the needs of the tax department of different industries, allowing us to robotize processes such as: verification of electronic accounting books, records of purchases and sales, determination and monthly tax return working papers. As well as the determination of the current and deferred Corporate Income Tax. In general, every operational and manual process carried out by the tax department could be robotically automatized generating the following benefits:

- Speed and efficiency: the robot works 24/7.
- Quality and Flexibility: eliminates the risk of human error.
- Automation and better adaptability to changes.
- Cost savings from operational efficiency.
- Continuous improvement in process optimization.

Process optimization and improvement

By identifying the processes managed by the tax department, we analyze its end-to-end flow to identify opportunities for improvement and establish adequate controls. We have created a map of controls and an action plan for improvement opportunities. We also support in the implementation of required changes.

Tax Indicators

We support companies in the implementation of a Tax Control Panel that allows the registration and administration of the main tax indicators that we create according to the sector in which the company is located.

Through RPA, we support the implementation of robots as part of the indicator automation process.

Legal Services

Our solid knowledge of the law and our client's, allow us to provide a high-quality service focused on business needs in the most efficient and timely manner.

**For more information,
please contact:**



Carlos Cárdenas
carloscardenas@kpmg.com



Alejandro Vargas
aavargas@kpmg.com

We seek to provide high value advisory services in matters of corporate, commercial, administrative and regulatory law, business compliance and civil law issues in general.

Legal Advisory Services

We provide advice on corporate matters which includes the incorporation, dissolution or liquidation of companies, branches and other legal entities, modifications of corporate bylaws, capital increases and reductions, appointment and removal of representatives, granting and revocation of powers, among others.

Legal assistance in the design, negotiation, celebration, execution and conclusion of all types of contracts and civil, commercial and financial agreements. Likewise, we provide legal opinions on the scope and interpretation of contractual clauses.

Our legal assistance includes the identification of alternatives, design and execution of corporate reorganization processes (transformations, mergers, spin-offs and simple reorganizations).

Business transactions

We advise on the structuring and implementation of mergers and acquisitions of companies, establishment of business relationships and sale of businesses.

We carry out Due Diligence identifying the main relevant legal aspects in investment transactions, as well as comprehensive assistance in the drafting and negotiation of purchase agreements and other related contracts.

Legal Compliance Diagnosis

We provide advice on the implementation and development of the money laundering and terrorism financing prevention system, compliance with free competition, fraud and anti-corruption, good corporate governance practices as well as compliance according to the Personal Data Protection Law and its regulation.

Legal Services

Our solid knowledge of the law and our client's, allow us to provide a high-quality service focused on business needs in the most efficient and timely manner.

**For more information,
please contact:**



Carlos Cárdenas
carloscardenas@kpmg.com



Alejandro Vargas
aavargas@kpmg.com

ESG and Legal Advice

We advise our clients in the face of recent and constant regulatory changes in the ESG environment. Our services include, among others:

- Monitoring and reporting ESG regulations in all countries where the company operates, anticipating them.
- The evaluation of the risk and impact of regulatory developments and ESG standards on the activity.
- The design of legal operations and the most appropriate tools to control regulatory risk.
- Advice on the necessary changes, drawing 'red lines' that allow defining the most appropriate compliance framework.
- The contribution to making explicit the organization's commitment to ESG standards.
- The legal defense of the company against complaints and claims related to these matters.

Legal Operations Transformation Services (LOTS)

As budget constraints and resourcing challenges continue to be dominant issues for corporate legal departments, legal teams are focused on cost optimization, automation/efficiency opportunities and improving data use, analysis and reports.

Our LOTS team is made up of lawyers and professionals who understand the needs of legal areas and general counsel. Our team helps the legal areas of companies to modernize their functions through strategies, solutions and services that better align the legal department with the business.

In this way, we can advise them by carrying out a diagnosis of the current state of the people, processes and technology pillars of the operating model of the company's legal department, being able to discover areas in which both efficiencies and cost savings can be achieved.

Likewise, we can advise them on the implementation of the findings and recommendations for improvement identified during the diagnosis phase, using their own tools and strategic alliances.

Global Mobility Services

Our global service delivery model is a combination of standard processes and technology tools, helping to deliver consistent service quality around the world.

**For more information,
please contact:**



Carlos Cárdenas
carloscardenas@kpmg.com



Samuel Chauca
schauca@kpmg.com

Our service integrates advice and management in labor, tax, immigration and social security matters for employees in mobility or international assignment with the international support of the KPMG network.

International Assignment Consulting

Exit interview from the country of origin and arrival at the destination: Individualized interviews to determine the labor implications derived from the international assignment of the employee.

Preparation of annual tax returns considering international assignments: Tax returns filing both in the country of origin and destination of employees on international assignment.

Registration to the Peruvian Tax ID Registry (RUC): Support to the employee in obtaining their tax ID number, as well as their username and access password (SOL) to log in in the Tax Authority virtual platform to fulfill their tax obligations.

Additional services:

Monthly tax return: Preparation of monthly tax calculations required for filing the tax return and in the country of destination, in those cases in which the salaries of the employees on international assignment are not registered in the local payroll in destination.

Shadow Payroll: Support in the preparation of Shadow Payroll of those employees on assignment in case the remuneration of the assignee is reported in the payroll of the country of destination.

Gross Up: Grossing amount of the remuneration/benefits that have been agreed in net values.

Hypothetical Tax : Prepare the hypothetical or net tax that the assigned person would receive in their country of origin if they had not moved on an international assignment.

Tax Equalization: Annual preparation of the tax equalization for the tax calculation of employees on assignment according to the conditions of their corporate policy.

Social Security: Support in the withdrawal of pension funds or retirement programs contributions in the country of destination of the employee on assignment, if applicable.

Labor & Immigration

We advise on the hiring of national and foreign personnel, compensation and labor benefits, organization of the employment relationship, labor procedures, among others, for national and global companies.

For more information, please contact:



Carlos Cárdenas
carloscardenas@kpmg.com



Samuel Chauca
schauca@kpmg.com

We provide comprehensive and preventive advice on labor matters. We review compliance with labor obligations and propose more efficient alternatives for talent management and labor cost administration.

Labor diagnostics

We evaluate the compliance level according to the labor and Occupational Health and Safety (OSH) obligations, measuring their impact on organizational performance. We carry out a preventive review that allows companies to verify if they comply with the requirements established by jurisprudence and the Labor Authority.

Labor planning

We recommend organizational, remunerative, contracting and organization of labor relations structures that lead to more efficient management of human capital and better administration of labor costs.

Labor consulting

Specialized, constant and timely professional support regarding the different areas of labor relations (individual and collective), including labor aspects derived from business operations, such as mergers, acquisitions and reorganizations.

Sponsorship of labor processes

We provide advice and labor sponsorship in the context of the New Labor Procedural Law that has changed the judicial process incorporating oral hearings.

We support in case of labor inspections of the National Superintendence of Labor Inspection (SUNAFIL).

Trainings

Sd-hoc training on all labor matters, including those required by law.

About KPMG

KPMG in the world

KPMG is a global network of the world's leading professional services firms, providing innovative business solutions and audit, tax (tax and legal) and advisory services to many of the largest and most prestigious organizations. We operate in 144 countries and have more than 236,000 people working in member firms around the world.

KPMG announced its intention to become a zero-carbon business by 2030, as part of its continued focus on generating growth in a sustainable manner. Our environmental, social and governance (ESG) commitments brought together in KPMG: Our Impact Plan, to present our actions that have now gained even more traction, in four categories: Planet, People, Prosperity and Governance

KPMG One Américas

We operate as a single firm from the United States to Chile, in an integrated, consistent and strategic manner for the benefit of our clients; which gives us the governance to mobilize resources, specialized expertise, good practices and efficient coordination.

Our growth rate
Global FY23
was



\$36.4
USD Billions

Source: 2023 KPMG Global
Corporate Reporting

To be better for our customers, together we
are stronger.



17
countries



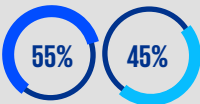
57,000
people

KPMG in Perú

Operating in Peru for 51 years, we are a multidisciplinary team of more than 500 professionals trained to provide our clients with a quality service with international standards and policies to an important portfolio of clients, both locally and internationally.

Extraordinary people

100% equal pay with
a career plan and
compensation based
on meritocracy.



● Women
● Men

Inclusive Culture

We promote diversity, equity
and equality at work

+600
professionals

In Peru, **27%**

of the companies that
issue SMV securities
are audited by us.

Source: Analysis based on the Top 100
companies in the Top 500 Ranking of Peru,
América Economía, audited by Big4 in 2021.

Our Values

We have values by which we live.
They guide our daily decisions and
actions, define what we stand for,
and create a sense of shared
identity at the Global level.



Integrity

We do the
right thing.



Excellence

We never stop
learning and
improving.



Courage

We think
and act
boldly.



Together

We respect each
other and turn
our differences
into strengths.

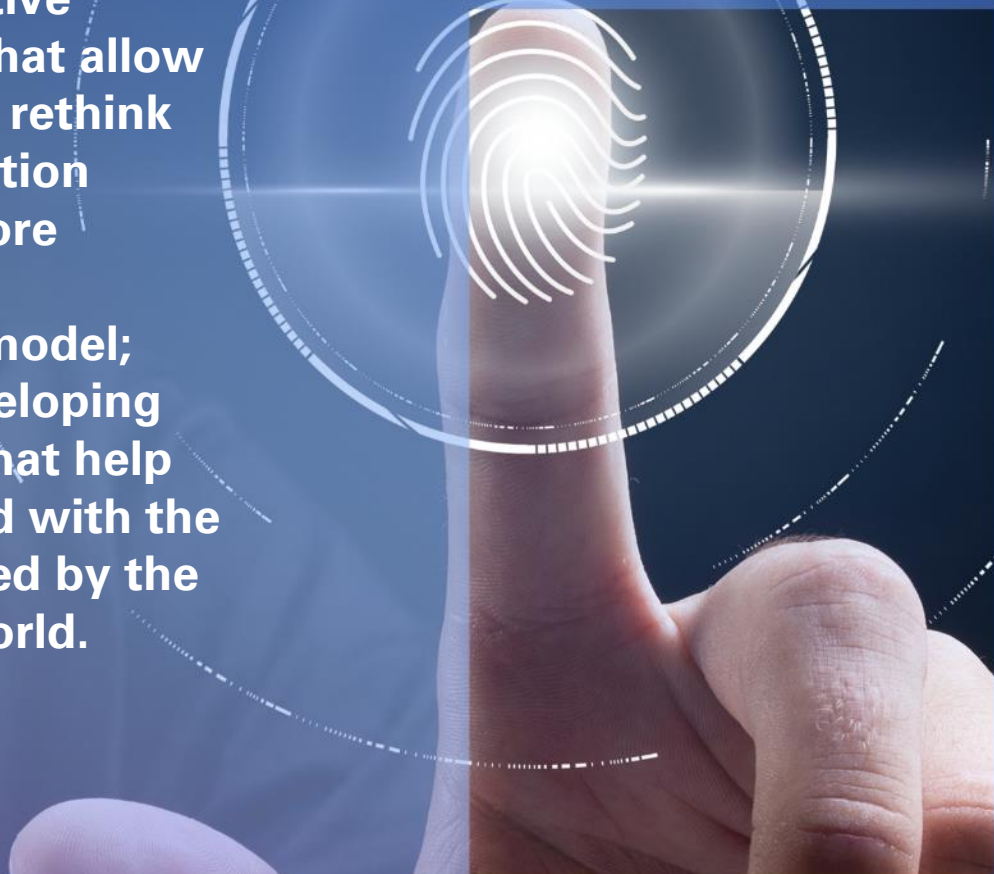


**For
Better**

We do what
really matters.



KPMG's Tax & Legal team in Peru works under disruptive approaches that allow our clients to rethink their tax function towards a more effective and transparent model; aimed at developing capabilities that help them respond with the agility required by the globalized world.



**Know your
Tax footprint**

www.kpmg.com/pe



KPMG Tower

Av. Javier Prado Este 444, Piso 27

San Isidro, Lima 27, Perú

Telf. 51(1) 611-3000

Tax & Legal : taxlegalperu@kpmg.com

KPMG in Perú



The information contained herein is general in nature and is not intended to address the circumstances of any particular individual or entity. Although we endeavor to provide accurate and timely information, there can be no guarantee that such information is correct on the date it is received or that it will continue to be correct in the future. No one should take action based on such information without proper professional advice after a detailed study of the particular situation.

© 2024 KPMG Asesores S. Civil de R. L., a Peruvian limited liability civil society and member firm of the KPMG global organization of independent member firms affiliated with KPMG International Limited, an English private company limited by guarantee. All rights reserved.

